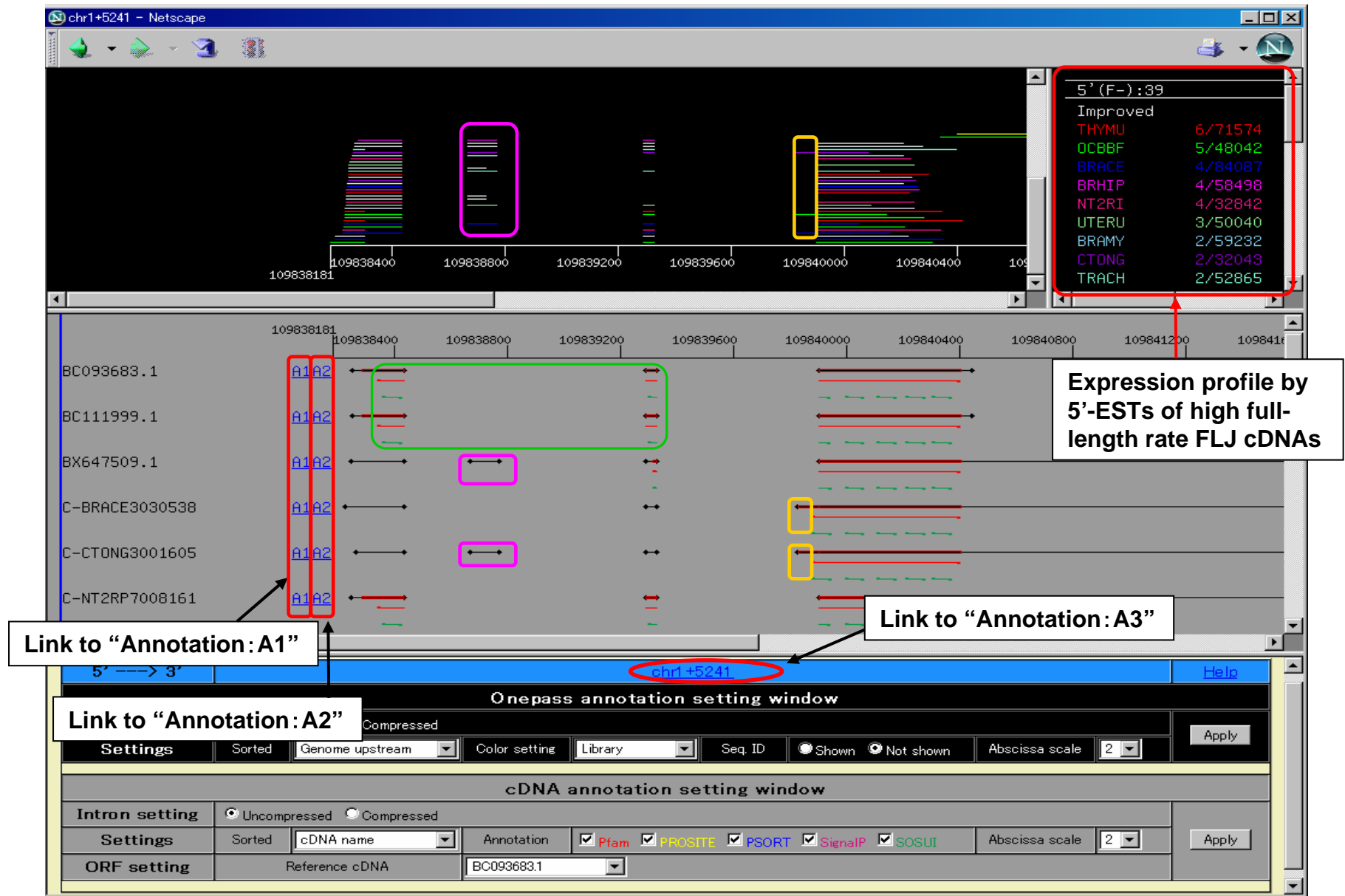





Fig2-12 Annotation and genome mapping viewer (mRNA variation viewer)


Database ver. 3.0



 same ORF region, same reading frame as selected reference cDNA

 same ORF region, 2nd frame

 same ORF region, 3rd frame

 different ORF region

 → same ORF region, same reading frame as selected reference cDNA

 → same ORF region as selected reference cDNA, 2nd frame

 → same ORF region as selected reference cDNA, 3rd frame

 → different ORF region

 → mRNA region (existed cDNA sequence)